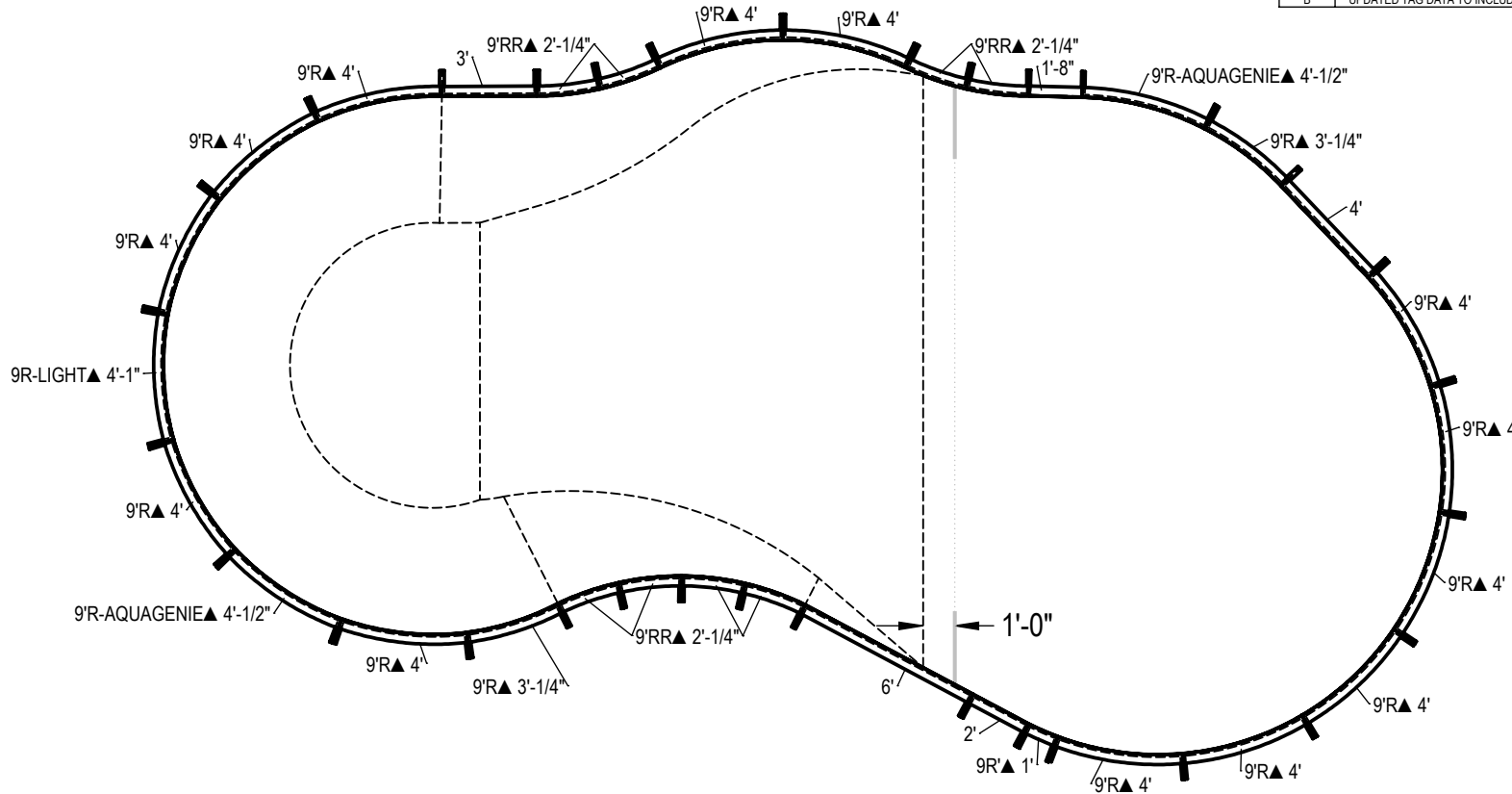


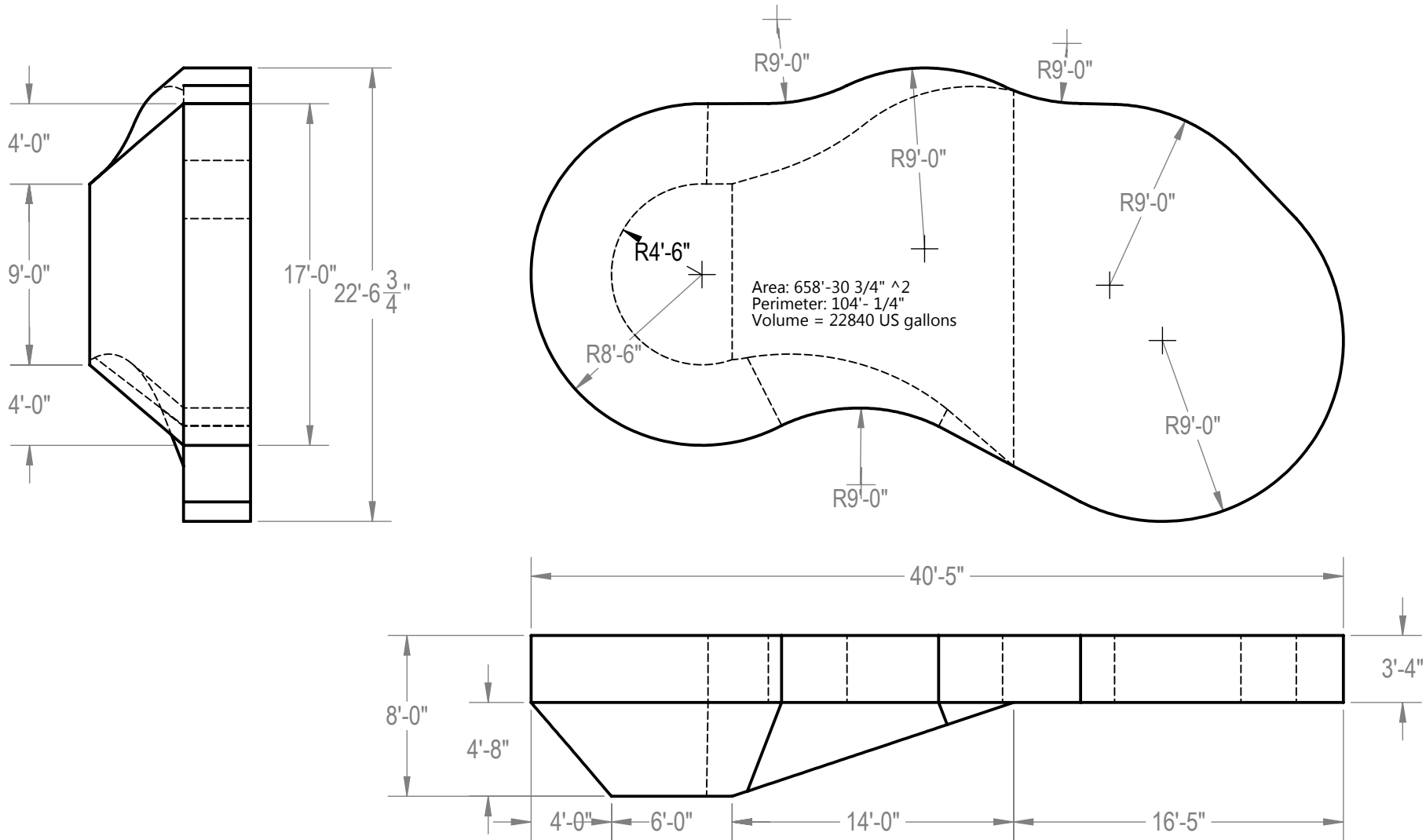
| REVISION HISTORY | | | | |
|------------------|---|-----------|--------|-----------|
| REV. | DESCRIPTION | DATE | ECO | BY |
| A | RELEASED FOR PRODUCTION | 1/9/2014 | | RCOLBOCH |
| B | UPDATED TAG DATA TO INCLUDE COPING LENGTHS. | 1/26/2015 | 391702 | JBOSSEDET |



| ITEM | FILE NAME | DESCRIPTION | CUSTOMER DRAWING # | VENDOR PART # | QTY. | VENDOR NAME | MATERIAL |
|------|----------------------------------|---|--------------------|---------------|------|-------------|----------|
| 1 | BRACE | BRACE, 5 TAB, TRANQUILITY - 500 SERIES | HP599 | HP599 | 32 | HYDRA POOLS | PS |
| 2 | PANEL, 1'-8 IN LONG | PANEL, 1'-8" LONG - 500 SERIES | HP516 | HP516 | 1 | HYDRA POOLS | PS |
| 3 | PANEL, 2' LONG | PANEL, 2' LONG - 500 SERIES | HP502 | HP502 | 1 | HYDRA POOLS | PS |
| 4 | PANEL, 3' LONG | PANEL, 3' LONG - 500 SERIES | HP503 | HP503 | 1 | HYDRA POOLS | PS |
| 5 | PANEL, 4' LONG | PANEL, 4' LONG - 500 SERIES | HP504 | HP504 | 1 | HYDRA POOLS | PS |
| 6 | PANEL, 6' LONG | PANEL, 6' LONG - 500 SERIES | HP506 | HP506 | 1 | HYDRA POOLS | PS |
| 7 | PANEL, 9' RADIUS WITH AQUA GENIE | PANEL, 9' RADIUS WITH AQUAGENIE - 500 SERIES | HP559A | HP559A | 2 | HYDRA POOLS | PS |
| 8 | PANEL, 9' RADIUS WITH LIGHT | PANEL, 9' RADIUS WITH LIGHT - 500 SERIES | HP559LL | HP559LL | 1 | HYDRA POOLS | PS |
| 9 | PANEL, 9' RADIUS, 1' LONG | PANEL, 9' RADIUS, 1' LONG - 500 SERIES | HP515D | HP515D | 1 | HYDRA POOLS | PS |
| 10 | PANEL, 9' RADIUS, 3' LONG | PANEL, 9' RADIUS, 3' LONG, ROMAN - 500 SERIES | HP525D | HP525D | 2 | HYDRA POOLS | PS |
| 11 | PANEL, 9' RADIUS, 4' LONG | PANEL, 9' RADIUS, 4' LONG - 500 SERIES | HP559 | HP559 | 13 | HYDRA POOLS | PS |
| 12 | PANEL, 9' REVERSE RADIUS | PANEL, 9' REVERSE RADIUS - 500 SERIES | HP519N | HP519N | 8 | HYDRA POOLS | PS |

- NOTES:**
- THESE ARE FINISHED DIMENSIONS READY FOR THE LINER.
 - DIMENSIONS ARE FROM INSIDE POOL PANELS.
 - THE IDEAL WATER LEVEL SHOULD BE TO THE MIDDLE OF THE SKIMMER OPENING(S).
- EXCAVATION NOTES:**
- ROUGH EXCAVATION SHOULD BE 2" DEEPER IN EACH INSTANCE.
 - SOIL TO HAVE MINIMUM BEARING CAPACITY OF 1500 PSF.
 - LOCATE TOP OF POOL AT LEAST 6" ABOVE THE SURROUNDING LAND ELEVATION.
 - SEE "OVER DIG DETAIL" FOR EXCAVATION AROUND POOL.
 - FILL VOIDS UNDER BASE OF PANELS AND TAMP WELL.
 - BACK FILL WITH NON-EXPANSIVE MATERIAL.
 - ANSI / APSP / ICC-5 FOR RESIDENTIAL POOLS, 2003-2007 BOCA CODE SECTION 421.
- IMPORTANT NOTES:**
- THIS DOCUMENT IS FOR ILLUSTRATIVE PURPOSES ONLY. THE DEALER OR CONTRACTOR WHO SELLS OR INSTALLS YOUR POOL IS AN INDEPENDENT CONTRACTOR AND IS NOT AN AGENT OF THE MANUFACTURER. THE CONSTRUCTION METHODS ILLUSTRATED HERE ARE SUGGESTIONS AND APPLY ONLY TO NORMAL GROUND CONDITIONS. THERE MAY BE ADDITIONAL PRECAUTIONS AND/OR METHODS OF CONSTRUCTION. PROPER INSTALLATION IS THE RESPONSIBILITY OF THE DEALER/BUILDER/CONTRACTOR.

| | | | | | | |
|--|-------------------------------------|---|---------------------------------------|--|--------------------|----------------|
| ENGINEERING DRAWING NUMBER: 00005032 | WEIGHT: | UNLESS OTHERWISE SPECIFIED DIMENSIONS ARE IN INCHES TOLERANCES DECIMALS: X ± .1 XX ± .01 XXX ± .001 XXXX ± .0005 | DESIGNED BY: RCOLBOCH | CREATION DATE: 1/7/2014 | HYDRA POOLS | |
| | VOLUME: Inch ³ | | DETAILED BY: JBOSSEDET | DETAILED DATE: 10/5/2012 | | |
| | COLOR: | | LAST REVISED BY: jbosserdet | LAST REVISED DATE: 1/26/2015 | | |
| | HEAT TREAT: | | MATERIAL: | TITLE: LAYOUT, 22'-7" x 40'-5", MIRAGE, 8' DEEP, 500 SERIES | | |
| NA | ANGULAR: X ± 0.5 | THIRD ANGLE PROJECTION | PART NUMBER: 50916 | | SCALE: 1:192 | SIZE: A |
| NA | | | | | SHEET: 1 OF 6 | |



NOTES:

1. THESE ARE FINISHED DIMENSIONS READY FOR THE LINER.
2. DIMENSIONS ARE FROM INSIDE POOL PANELS.
3. THE IDEAL WATER LEVEL SHOULD BE TO THE MIDDLE OF THE SKIMMER OPENING(S).

EXCAVATION NOTES:

4. ROUGH EXCAVATION SHOULD BE 2' DEEPER IN EACH INSTANCE.
5. SOIL TO HAVE MINIMUM BEARING CAPACITY OF 1500 PSF.
6. LOCATE TOP OF POOL AT LEAST 6" ABOVE THE SURROUNDING LAND ELEVATION.
7. SEE "OVER DIG DETAIL" FOR EXCAVATION AROUND POOL.
8. FILL VOIDS UNDER BASE OF PANELS AND TAMP WELL.
9. BACK FILL WITH NON-EXPANSIVE MATERIAL.
10. ANSI / APSP / ICC-5 FOR RESIDENTIAL POOLS, 2003-2007 BOCA CODE SECTION 421.

IMPORTANT NOTES:

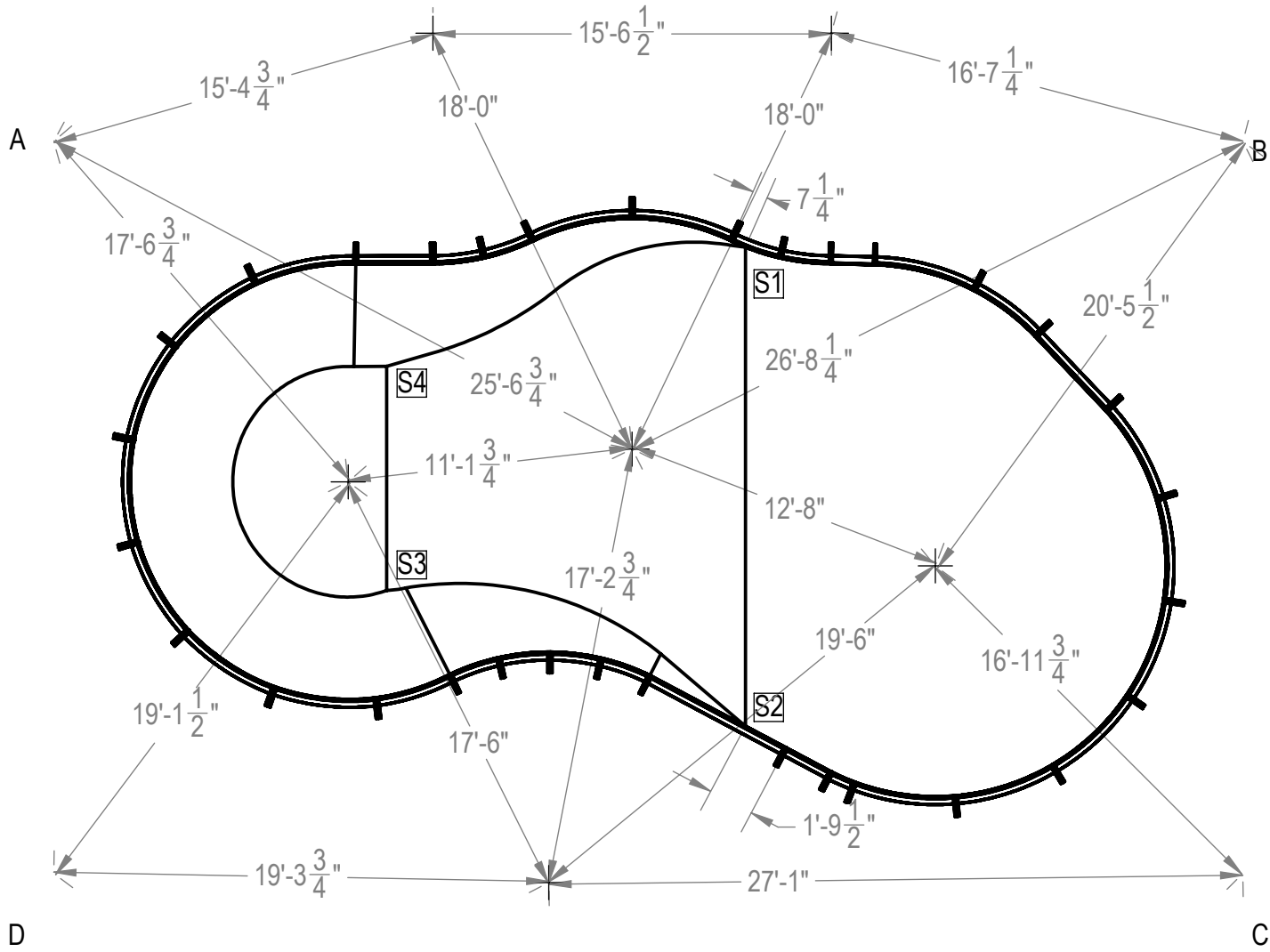
11. THIS DOCUMENT IS FOR ILLUSTRATIVE PURPOSES ONLY. THE DEALER OR CONTRACTOR WHO SELLS OR INSTALLS YOUR POOL IS AN INDEPENDENT CONTRACTOR AND IS NOT AN AGENT OF THE MANUFACTURER. THE CONSTRUCTION METHODS ILLUSTRATED HERE ARE SUGGESTIONS AND APPLY ONLY TO NORMAL GROUND CONDITIONS. THERE MAY BE ADDITIONAL PRECAUTIONS AND/OR METHODS OF CONSTRUCTION. PROPER INSTALLATION IS THE RESPONSIBILITY OF THE DEALER/BUILDER/CONTRACTOR.

| | | | | | |
|--|-------------------|---|--------------------|----------------|--|
| ENGINEERING DRAWING NUMBER: 00005032 | WEIGHT: | UNLESS OTHERWISE SPECIFIED DIMENSIONS ARE IN INCHES TOLERANCES DECIMALS: X ± .1 XX ± .01 XXX ± .001 XXXX ± .0005 ANGULAR: X ± 0.5 THIRD ANGLE PROJECTION | DESIGNED BY: | CREATION DATE: | HYDRA POOLS |
| | lbs | | RCOLBOCH | 1/7/2014 | |
| | VOLUME: | | | DETAILED BY: | DETAILED DATE: |
| | Inch ³ | | | JBOSSERDET | 10/5/2012 |
| COLOR: | | LAST REVISED BY: | LAST REVISED DATE: | TITLE: | LAYOUT, 22'-7" x 40'-5", MIRAGE, 8' DEEP, 500 SERIES |
| NA | | jbosserdet | 1/26/2015 | PART NUMBER: | |
| HEAT TREAT: | | MATERIAL: | | | |
| NA | | | | | |
| FINISH: | | | | | |
| NA | | | | | |
| TEXTURE: | | | | | |
| NA | | | | | |

50916

SCALE: 1:192
SHEET: 2 OF 6
SIZE: **A**

| | |
|------|-------------|
| A-S1 | 27'-3 1/2" |
| B-S1 | 19'-10" |
| A-S2 | 35'-4" |
| B-S2 | 29'-11 1/2" |
| A-S3 | 21'-9 3/4" |
| B-S3 | 37'-8 3/4" |
| A-S4 | 15'-8" |
| B-S4 | 34'-6 1/2" |



ENGINEERING DRAWING NUMBER:
00005032

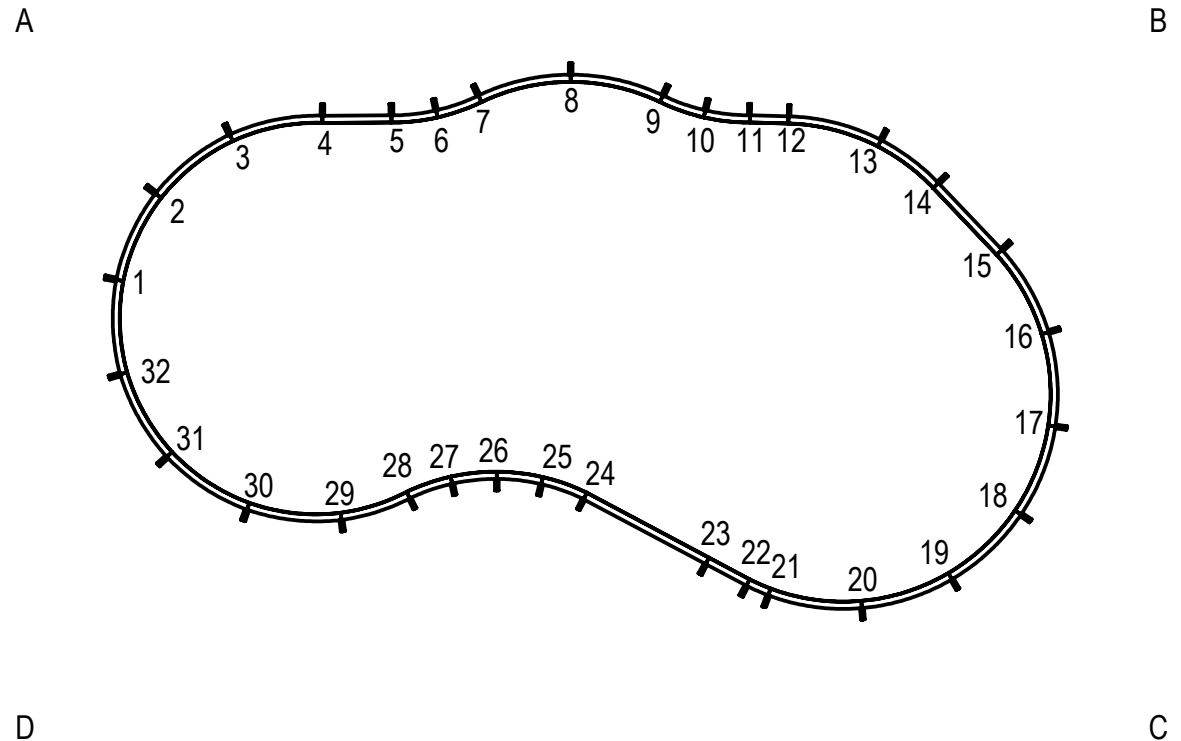
UNLESS OTHERWISE SPECIFIED
DIMENSIONS ARE IN INCHES
TOLERANCES
DECIMALS: X ± 0.1
 XX ± 0.01
 XXX ± 0.005
 XXXX ± 0.0005
ANGULAR: X ± 0.5
THIRD ANGLE PROJECTION

DESIGNED BY: RCOLBOCH
CREATION DATE: 1/7/2014
DETAILED BY: JBOSSERDET
DETAILED DATE: 10/5/2012
LAST REVISED BY: jbossedet
LAST REVISED DATE: 1/26/2015
MATERIAL:

HYDRA POOLS
TITLE: LAYOUT, 22'-7" x 40'-5", MIRAGE, 8'
DEEP, 500 SERIES
PART NUMBER: 50916
SCALE: 1:192
SIZE: A
SHEET: 3 OF 6

| | A | B | C | D |
|----|-------------|-------------|-------------|-------------|
| 1 | 12'- 3/4" | 44'-9 1/2" | 46'-5 1/4" | 17'-2 1/2" |
| 2 | 9'-4 1/4" | 42'-4 1/2" | 46'-4 3/4" | 21'-1" |
| 3 | 9'-8" | 38'-10 3/4" | 44'-10" | 24'-3 3/4" |
| 4 | 12'-8 1/2" | 34'-11 1/4" | 42'-0" | 26'-6 1/2" |
| 5 | 15'-6 1/2" | 31'-11 1/2" | 39'-6 3/4" | 28'- 1/4" |
| 6 | 17'-4 3/4" | 29'-11 1/2" | 38'-1 1/2" | 29'-3 3/4" |
| 7 | 19'-1 1/4" | 27'-11 1/2" | 37'-1 1/4" | 30'-11 3/4" |
| 8 | 22'-9 1/4" | 24'- 1/4" | 34'-11 1/4" | 34'-1 1/4" |
| 9 | 26'-8 3/4" | 20'-4" | 31'-9" | 36'-2" |
| 10 | 28'-8 1/2" | 18'-7 1/2" | 30'- 1/2" | 37'-1 3/4" |
| 11 | 30'-8 1/2" | 16'-9" | 28'-8 1/2" | 38'-6 3/4" |
| 12 | 32'-4 1/2" | 15'-2" | 27'-9 1/4" | 39'-10 1/4" |
| 13 | 36'-4 1/4" | 12'-0" | 25'- 3/4" | 42'-6" |
| 14 | 39'- 1/2" | 11'-1 1/4" | 22'-5 1/2" | 43'-7 3/4" |
| 15 | 42'-4 1/2" | 11'-9 1/2" | 18'-10" | 44'-10 1/4" |
| 16 | 45'-2 1/2" | 14'-4 1/4" | 15'-0" | 45'-5" |
| 17 | 46'-10 1/4" | 18'-2" | 11'-1 1/4" | 44'-7" |
| 18 | 47'-1 1/4" | 22'-1" | 8'-3 3/4" | 42'-5" |
| 19 | 45'-11" | 25'-5 1/4" | 8'-6 3/4" | 39'-2 1/4" |
| 20 | 43'-5 1/2" | 27'-10 1/2" | 11'-7 1/2" | 35'-3 3/4" |
| 21 | 40'- 1/4" | 29'-2 3/4" | 15'-6 3/4" | 31'-5 1/2" |
| 22 | 39'- 1/2" | 29'-4 1/2" | 16'-6 3/4" | 30'-7" |
| 23 | 37'-1" | 29'-7 1/2" | 18'-6" | 28'-11 3/4" |
| 24 | 31'-2 3/4" | 31'-1 1/2" | 24'-4 3/4" | 24'-6 1/4" |
| 25 | 29'-4 1/2" | 32'-1 3/4" | 26'-4 3/4" | 22'-11 1/2" |
| 26 | 27'-9 1/4" | 33'-7" | 28'-4 1/2" | 21'-2 1/2" |
| 27 | 26'-7" | 35'-4" | 30'-2 3/4" | 19'-3 1/2" |
| 28 | 25'-10 3/4" | 37'-3 1/2" | 31'-10 3/4" | 17'-3 1/2" |
| 29 | 25'-1" | 40'-2 1/4" | 34'-6" | 14'-4" |
| 30 | 22'-11 1/2" | 43'-4 1/4" | 38'-5 3/4" | 11'-3 1/4" |
| 31 | 19'-9 1/4" | 45'-4" | 42'-2 1/2" | 10'-10 1/4" |
| 32 | 15'-11 1/2" | 45'-9 3/4" | 44'-11 3/4" | 13'-4 1/2" |

| | |
|-----|------------|
| A-B | 46'-4 3/4" |
| B-C | 28'-6 3/4" |
| A-C | 54'-5 3/4" |

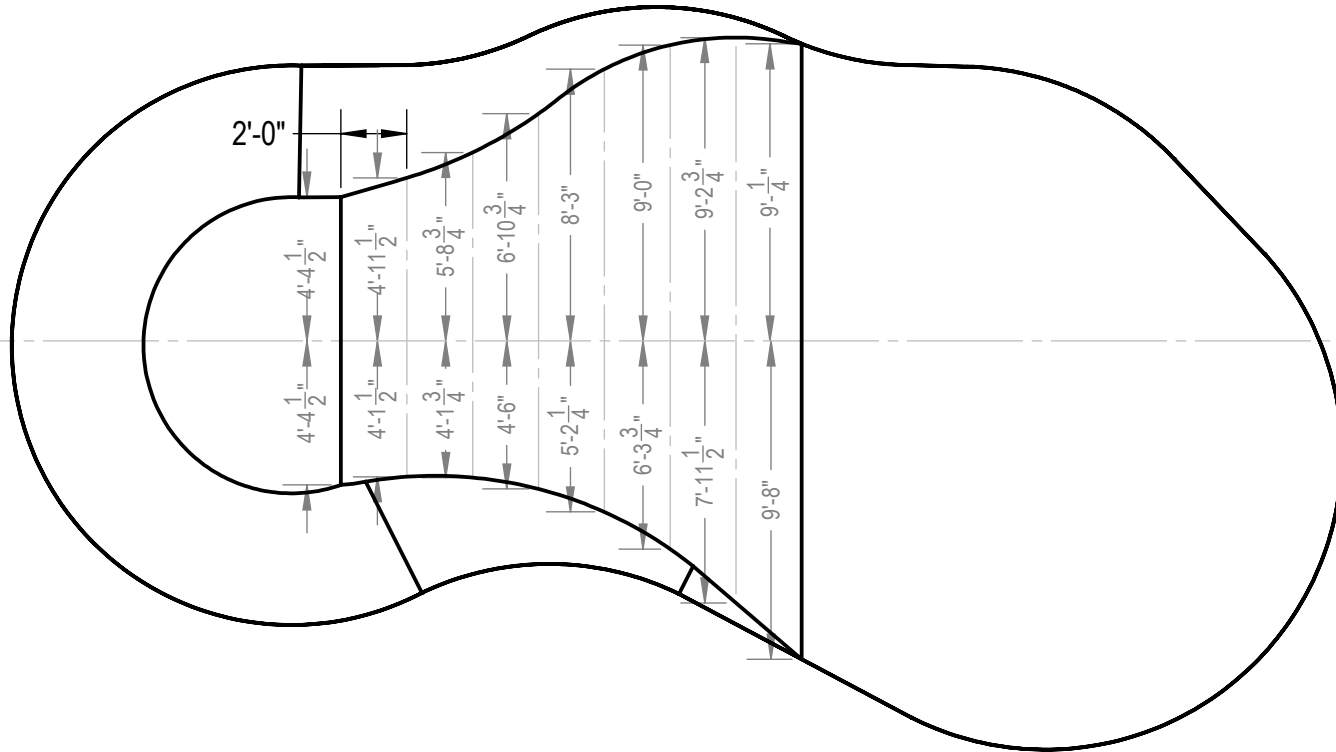


| | | | | |
|---|-------------------|---|------------------|--------------------|
| ENGINEERING DRAWING NUMBER 00005032 | WEIGHT: | UNLESS OTHERWISE SPECIFIED DIMENSIONS ARE IN INCHES TOLERANCES DECIMALS: X ± 0.1 XX ± 0.01 XXX ± 0.005 XXXX ± 0.0005 ANGULAR: X ± 0.5 THIRD ANGLE PROJECTION | DESIGNED BY: | CREATION DATE: |
| | lbs | | RCOLBOCH | 1/7/2014 |
| | VOLUME: | | DETAILED BY: | DETAILED DATE: |
| | Inch ³ | | JBOSSERDET | 10/5/2012 |
| | COLOR: | | LAST REVISED BY: | LAST REVISED DATE: |
| | NA | | jbossdet | 1/26/2015 |
| HEAT TREAT: | MATERIAL: | | | |
| NA | | | | |
| FINISH: | | | | |
| NA | | | | |
| TEXTURE: | | | | |
| NA | | | | |


| | |
|---|-------------------|
| HYDRA POOLS | |
| LAYOUT, 22'-7" x 40'-5", MIRAGE, 8' DEEP, 500 SERIES | |
| PART NUMBER: | 50916 |
| SCALE: 1:192 | SIZE: A |
| SHEET: 4 OF 6 | |

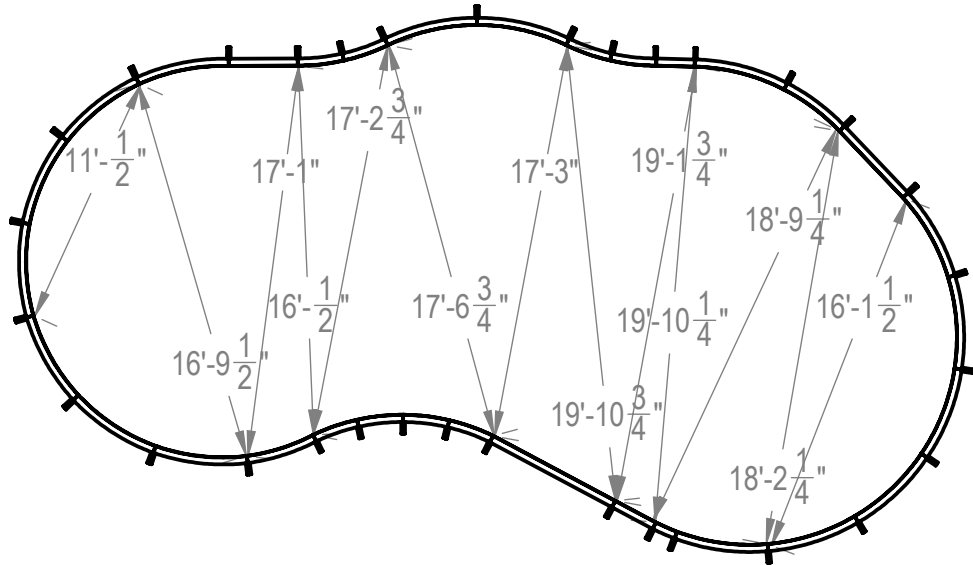
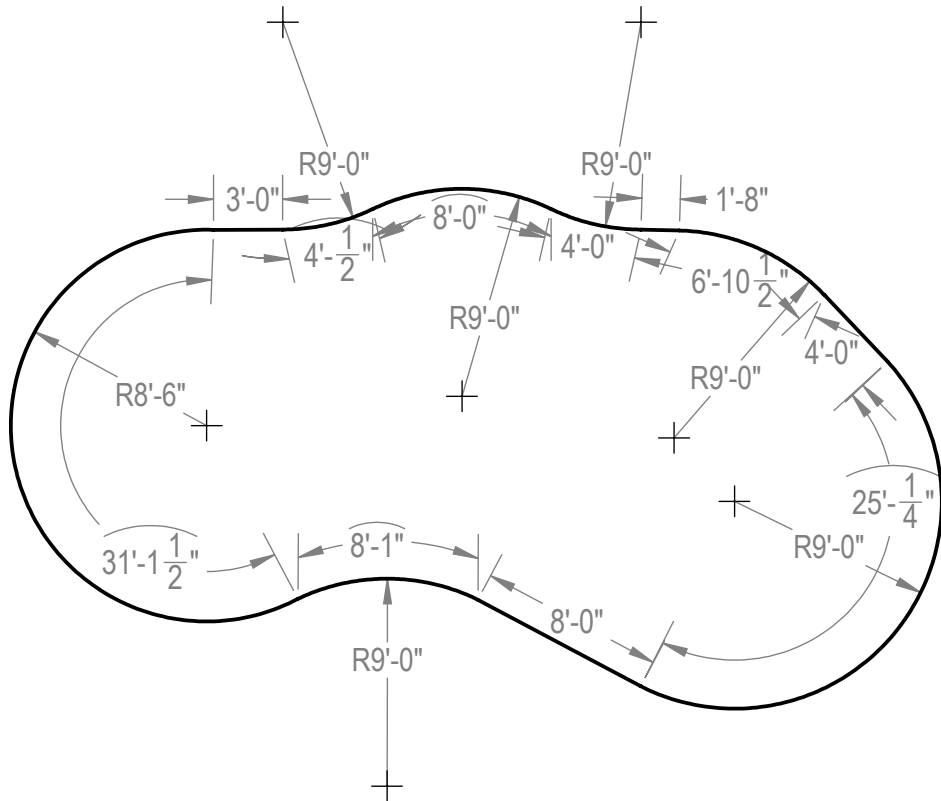
A
 13'-1 ³/₄"
 15'-5"
 D

B



C

| | | | | | |
|--|-------------------|---|------------------|--------------------|---|
| ENGINEERING DRAWING NUMBER: 00005032 | WEIGHT: | UNLESS OTHERWISE SPECIFIED DIMENSIONS ARE IN INCHES TOLERANCES DECIMALS: X ± 0.1 XX ± 0.01 XXX ± 0.005 XXXX ± 0.0005 ANGULAR: X ± 0.5 THIRD ANGLE PROJECTION  | DESIGNED BY: | CREATION DATE: | HYDRA POOLS TITLE: LAYOUT, 22'-7" x 40'-5", MIRAGE, 8' DEEP, 500 SERIES |
| | lbs | | RCOLBOCH | 1/7/2014 | |
| | VOLUME: | | DETAILED BY: | DETAILED DATE: | |
| | Inch ³ | | JBOSSERDET | 10/5/2012 | |
| | COLOR: | | LAST REVISED BY: | LAST REVISED DATE: | |
| NA | jbossdet | 1/26/2015 | PART NUMBER: | SCALE: | SIZE: |
| HEAT TREAT: | MATERIAL: | | 50916 | 1:192 | A |
| NA | | | | SHEET: | |
| FINISH: | | | | 5 OF 6 | |
| TEXTURE: | | | | | |
| NA | | | | | |



ENGINEERING DRAWING NUMBER:
00005032

| | |
|-------------------|---|
| WEIGHT: | UNLESS OTHERWISE SPECIFIED DIMENSIONS ARE IN INCHES TOLERANCES DECIMALS: X ± 0.1 XX ± 0.01 XXX ± 0.005 XXXX ± 0.0005 ANGULAR: X ± 0.5 THIRD ANGLE PROJECTION |
| lbs | |
| VOLUME: | |
| Inch ³ | |
| COLOR: | |
| HEAT TREAT: | |
| NA | |
| FINISH: | |
| TEXTURE: | |
| NA | |

| | | | |
|------------------|------------|--------------------|-----------|
| DESIGNED BY: | RCOLBOCH | CREATION DATE: | 1/7/2014 |
| DETAILED BY: | JBOSSERDET | DETAILED DATE: | 10/5/2012 |
| LAST REVISED BY: | jbosserdet | LAST REVISED DATE: | 1/26/2015 |
| MATERIAL: | | | |

| | |
|---|--------------|
| HYDRA POOLS | |
| LAYOUT, 22'-7" x 40'-5", MIRAGE, 8' DEEP, 500 SERIES | |
| PART NUMBER: | 50916 |
| SCALE: | 1:192 |
| SHEET: | 6 OF 6 |
| SIZE: | A |