

BEFORE YOU BEGIN

- Please read these instructions carefully to fully understand the required tools, materials, time required, and installation sequences.



CAUTION: Risk of personal injury or damage to the product. Proceed with care. It is recommended that Personal Protective Equipment be worn during the installation process.

QUALITY ALERT: (a) Install air lines so that there is no sag in the hose. Any sag can cause the line to waterlog and impair the performance of the jet. (b) Before setting the Cozy Cove in concrete, we recommend doing air pressure testing to ensure there are no leaks in the hoses. Additional parts may be required to complete this testing. (c) Follow manufacturer's instructions when using PVC Glue. Be careful not to get the glue on the inside of the line. It can cause a malfunction.

- Allow approximately two (2) hours to complete the installation of the Vacuum Form Cozy Cove Swim Outs Plumbing Assembly. Thank you for choosing Hydra Pools!

TOOLS REQUIRED

- PVC Cement Glue
- Large Screwdriver
(Phillips or Flathead—Only Handle is Used)
- PVC Pipe/Hose Cutter
- Channel Lock
- Duct Tape
- Caulk Gun and 100% Silicone Caulk

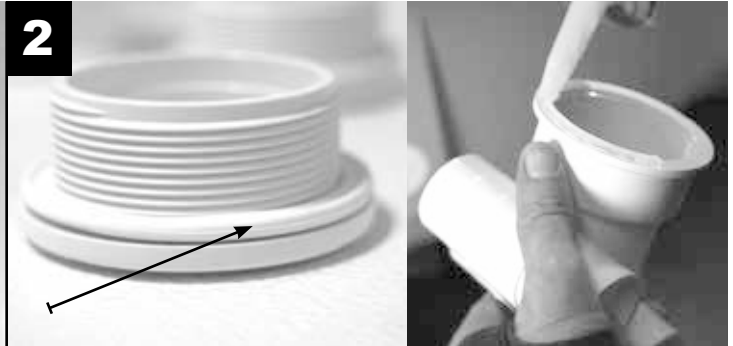
INCLUDED PARTS

- (1) – PVC Flex Hose (H02516)
- (1) – Top T-Connector for the Air Lines (H00240)
- (1) – Bottom Bullhead T-Connector for the Water Lines (H00478)
- (1) – Air Control Assembly (H00706 or H00706G)
- (6) – Internal Jets (H00584 or H00584G)
- (6) – Jet Assembly (H00588)
- (6) – Double O-Ring Gasket (H01313)
- (1) – 90° PVC Elbow (H01007—Used on HS604 Model Only)

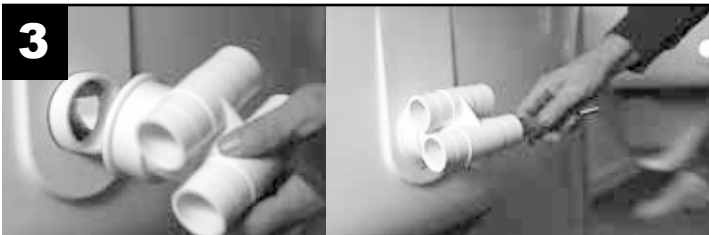
INSTALLATION INSTRUCTIONS



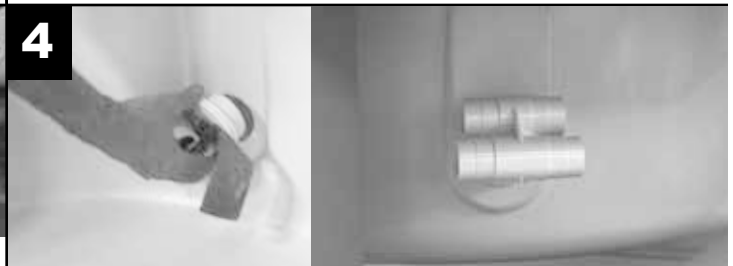
1 Install the Air Control Assembly (H00706) into the 1.75" hole on the top flange. (Model HS604 is located on the front left side.) Secure with the plastic nut provided and tighten with channel locks.



2 Unscrew the plastic nut from the jet housing. Place each of the six (6) gaskets (H01313) inside the plastic nuts. Make certain the gasket is flush with the bottom lip of the nut. Then apply a small amount of silicone around the flange of the jet body.



3 Insert the jet body nuts into the four (4) top holes of the cozy cove. Using the handle of a large screwdriver, tighten the jet body. Do not over-tighten. Wipe off the excess silicone. **NOTE:** The short coupling side is for air and needs to be on top when tightened. Water & air lines are labeled on jet body.



4 Insert the jet nuts into the two (2) bottom holes. Use duct tape to secure them in place until the body is installed on the back side. Apply a small bead around the flange of the jet body and tighten the jet body to the nut.



5 Remove air control knob from top flange of Cozy Cove. (Model HS604 is on the front left of the unit.) Then cut two (2) pieces of PVC hose (H02516) to 52" each.



6 Starting from the left side, connect the air coupling of the top jet to the air coupling to the bottom jet using one of the 52" hoses. Apply PVC cement to each outer end of the hose and the inside of the air coupling just before inserting the hose. **NOTE:** Ensure no glue gets inside of the interior of the jet housing.

INSTALLATION INSTRUCTIONS continued

7



NOTE: Make sure to install the line without ANY sag in it. Any sag will cause the jet to malfunction.

8



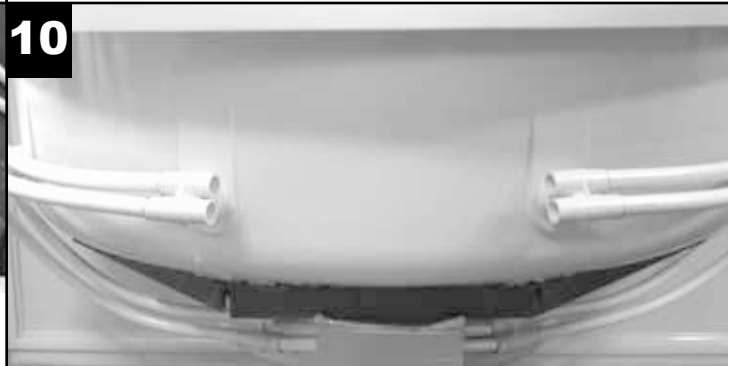
Starting again from the left side, connect the water coupling of the top jet to the bottom jet using the other 52" hose. Again, make certain there isn't any sag in the line. Connect this hose as you did before, using PVC cement.

9



Cut four (4) more pieces of the hose (H02516) to 24" each. Connect the two (2) bottom jet bodies in the same way as the previous two hoses, following the same procedure.

10



Working on the right side repeat steps 6 through 9. Only the top middle jet bodies remain unconnected.

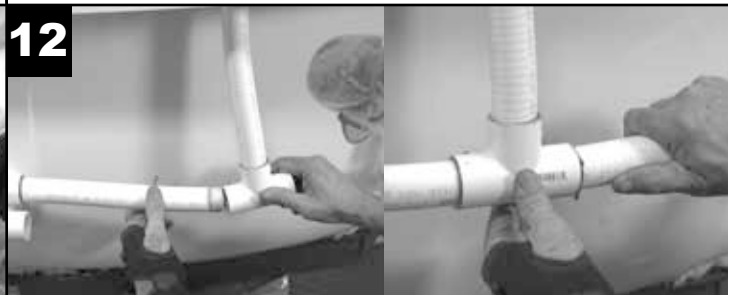
Skip to step 11B for model HS604

11



Cut five (5) pieces of hose to 11.5" and PVC cement it to the center hole of the 1" T-Connector (H00240) and the other end into the bottom of the Air Control Assembly (H00706) located under the top flange.

12



Glue one of the 11.5" hoses to the left side of the T-Connector and to the left side of the air coupling on the jet body. Repeat the process for the right side.

INSTALLATION INSTRUCTIONS continued

13



Use the Bullhead T-Connector (H00478) and glue each of the other 11.5" hoses on the left and right to the jet body on each side. Make sure the Bullhead T-Connector opening is pointed down.

14



Place the air control knob back on the fitting on the top flange of the Cozy Cove unit. Screw the jets into the front of the jet housing. Make it snug just enough to operate the control ring without unscrewing the jet. **NOTE: DO NOT OVERTIGHTEN JETS.**

11B Continued instructions for model HS604

Cut four (4) pieces of hose to 11.5", one (1) piece to 2.25", and one (1) piece to 63.5". Glue 2 of the 11.5" hoses to either side of the Bullnose T-Connector (H00478), making sure the opening faces down. Connect them to the jet body on either side. Do the same for T-Connector (H00240), but with the open side pointed up. Then glue the 2.25" hose to the top of the T-Connector, and glue the 90° elbow (H01007) on top of that with the opening of the elbow facing toward the air control assembly. Connect the 63.5" hose to the elbow and the back side of the air control assembly. Place the air control knob back on the fitting of the cozy cove. Screw the jets into the front of the jet housing.



- * If you plan to do pressure testing, be sure and wait at least 15 minutes to allow the PVC cement to dry.
- * Model HS404 will have leftover PVC hose and a 90° elbow that will not be used.
- * Unscrew jets every 3-4 months to make certain they don't get stuck. Calcium buildup or unbalanced water chemistry can cause the jets to stick or malfunction. Never overtighten jets!

For VIDEO instructions
scan the QR code →



HYDRA POOLS
543 S Main St.
Sweetwater, TN 37874
(800)518-4199