

**HYDRA
COVERS®**

HYDRA POOLS

COVER ORDER AND MEASURING FORM

A Division of P.I., Inc.
543 S. Main St.
Sweetwater, TN 37874
FAX: (800) 279-SWIM
VOICE: (800) 894-4876
www.hydrapools.com

STEP:1

Company: _____
Address: _____
City _____ State _____ ZIP _____
Phone: () _____
Ordered By: _____
PO # _____
Date: _____
Email: _____

STEP:2

SHIPPING INSTRUCTIONS

Company: _____
Address: _____
City _____ State _____ ZIP _____
Phone: () _____
o Mark Box: _____
Ship Via: _____

STEP:3

ORDER/QUOTE

☐ Quote Only ☐ Order

Material

☐ Mesh Safety ☐ Solid Winter
☐ Solid w/Mesh Drain

ANCHORS

☐ Brass Anchors ☐ Wood Anchors

SPACING

☐ 5 X 5

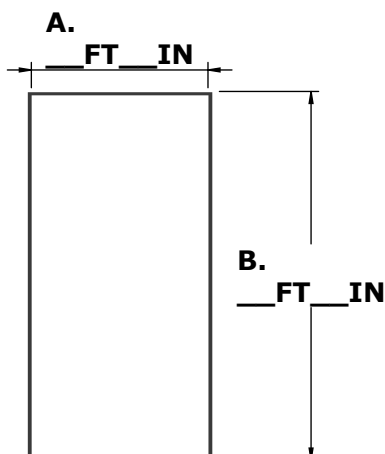
☐ 3 X 3

STEP:4 SIZE

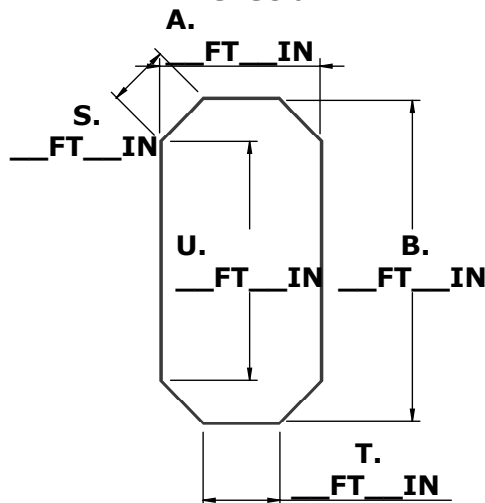
☐ Pool size ☐ Cover size

STEP:5 SELECT POOL SHAPE

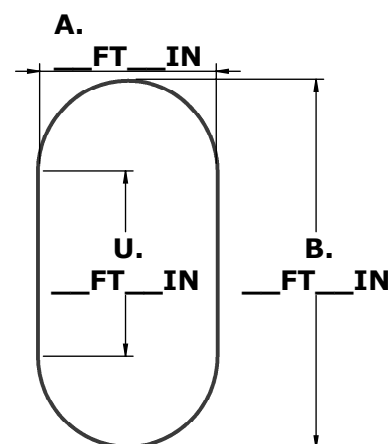
☐ Rectangle



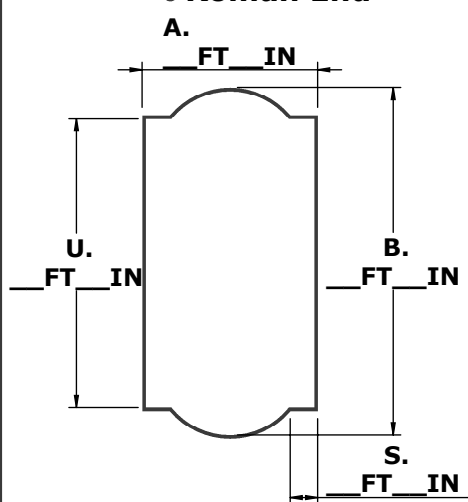
☐ Grecian



☐ Oval



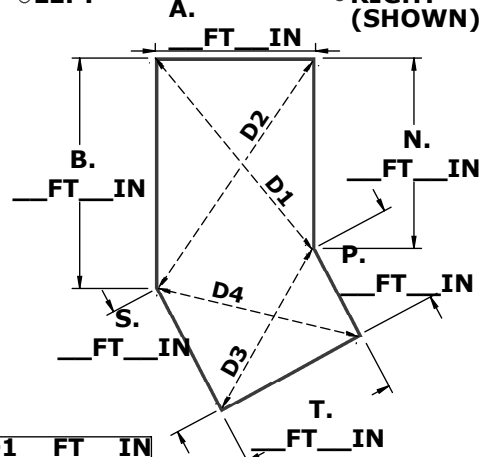
☐ Roman End



☐ LEFT

☐ LAZY L

☐ RIGHT (SHOWN)

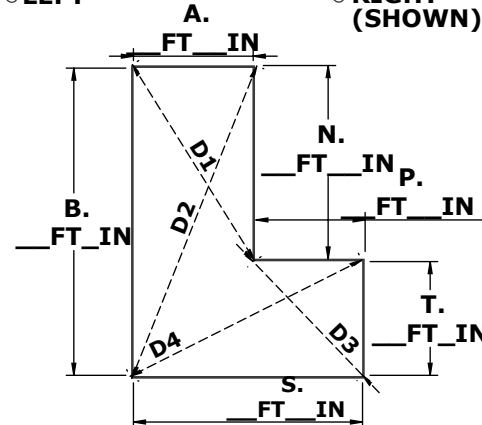


D1 _____ FT _____ IN
D2 _____ FT _____ IN
D3 _____ FT _____ IN
D4 _____ FT _____ IN

☐ LEFT

☐ TRUE L

☐ RIGHT (SHOWN)



D1 _____ FT _____ IN
D2 _____ FT _____ IN
D3 _____ FT _____ IN
D4 _____ FT _____ IN

REVERSE CORNER
☐ 90°
☐ _____ FT _____ IN RADIUS
☐ _____ FT _____ IN DIAGONAL

STEP:6 POOL CORNER SIZE

STEP:7 ADDITIONAL INFO

STEP:8 ADDITIONAL ITEMS

☐ Radius _____ FT _____ IN
☐ Diagonal _____ FT _____ IN

Cover will have square corners when pool has 2' or smaller radius corners.
Cover will have diagonal corners when pool corner radius is over 2' if square corner is not requested. Diagonal corners will have additional up charge.

☐ Additional information on page 2. (Steps, Swimouts, X-Y forms, etc)

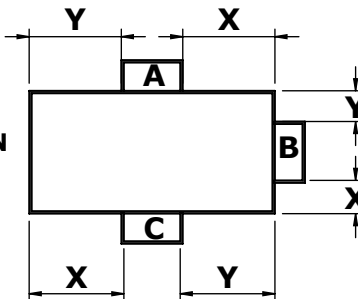
Additional Hardware:
(only if extra hardware is required)
Anchors/Brass _____ Qty-Wood Deck _____ Qty
Masonry Anchor Collars _____ Qty
Springs _____ Qty-Spring installation tool _____ Qty
Allen Anchor wrench _____ Qty

STEP:9 STEP/SWIMOUT MEASUREMENTS

○ NO STEPS/SWIMOUTS

- #1 FT IN FROM X- FT IN FROM Y
Location ○ A ○ B ○ C - Size FT IN X FT IN
- #2 FT IN FROM X- FT IN FROM Y
Location ○ A ○ B ○ C - Size FT IN X FT IN
- #3 FT IN FROM X- FT IN FROM Y
Location ○ A ○ B ○ C - Size FT IN X FT IN

For Free Form Steps See X-Y
measurement below



STEP:10 SIGN AND RETURN

SOME POOLS ARE NOT BUILT TO MANUFACTURERS SPECS. IT IS IMPORTANT THAT YOU VERIFY THE DIMENSIONS.
Note: Proper installation is the responsibility of the Dealer/ Consumer. I UNDERSTAND THE ABOVE WARNING AND RECOMMENDATIONS, CERTIFY THAT I WILL ABIDE BY ALL PERTINENT CONDITIONS, AND REQUEST THAT YOU PRODUCE THIS COVER AS ORDERED.

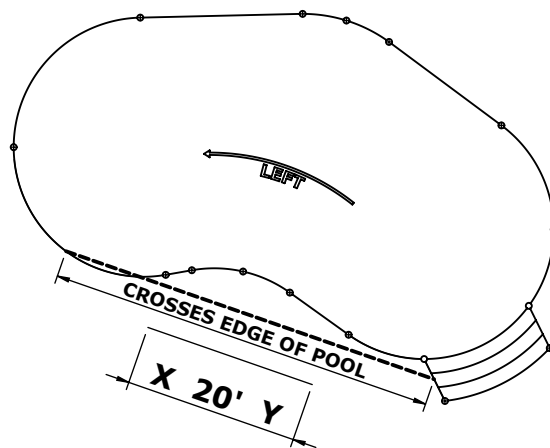
SIGNATURE _____

DATE _____

STEP:11 X - Y MEASUREMENTS

MEASURING USING X-Y METHOD

- For free form, out of square, or special features pools the X-Y measurement will take the guesswork out of getting an accurate fitting cover.
- Locate an X-Y line offset from the perimeter of the pool. The line needs to be at least 5' from any edge of the pool and 20' apart (at least 15'). Note: The line cannot cross any edge of the pool (see drawing of pool), if it does the measurements will not plot.
- Mark points around the perimeter of the pool every 2'. For pools with radius panels use more points and always try to get the end points and center points. On straight walls sections you can use only a couple of points to describe the shape.
- Place the end of the measuring tape on point X and record the distance to each mark on the form, repeat this with point Y. Two sets of measurements will be recorded for each point, one for X and one for Y. For curved outside steps mark and record as a points in the perimeter.
- Provide a sketch to indicate the pools direction, obstacles such as hand rails, grab rails, dive stands, etc. Use the X-Y method to determine the location of any obstructions. Note on the drawing.



Length of pool FT IN - Point# to Point#

Width of pool FT IN - Point# to Point#

1. Cross Dimension FT IN - Point# to Point#

2. Cross Dimension FT IN - Point# to Point#

DISTANCE BETWEEN X AND Y - FT IN

	X	Y	X	Y
	FT	IN	FT	IN
1				
2				
3				
4				
5				
6				
7				
8				
9				
10				
11				
12				
13				
14				
15				

	X	Y	X	Y
	FT	IN	FT	IN
16				
17				
18				
19				
20				
21				
22				
23				
24				
25				
26				
27				
28				
29				
30				

	X	Y	X	Y
	FT	IN	FT	IN
31				
32				
33				
34				
35				
36				
37				
38				
39				
40				
41				
42				
43				
44				
45				

	X	Y	X	Y
	FT	IN	FT	IN
46				
47				
48				
49				
50				
51				
52				
53				
54				
55				
56				
57				
58				
59				
60				

	X	Y	X	Y
	FT	IN	FT	IN
61				
62				
63				
64				
65				
66				
67				
68				
69				
70				
71				
72				
73				
74				
75				